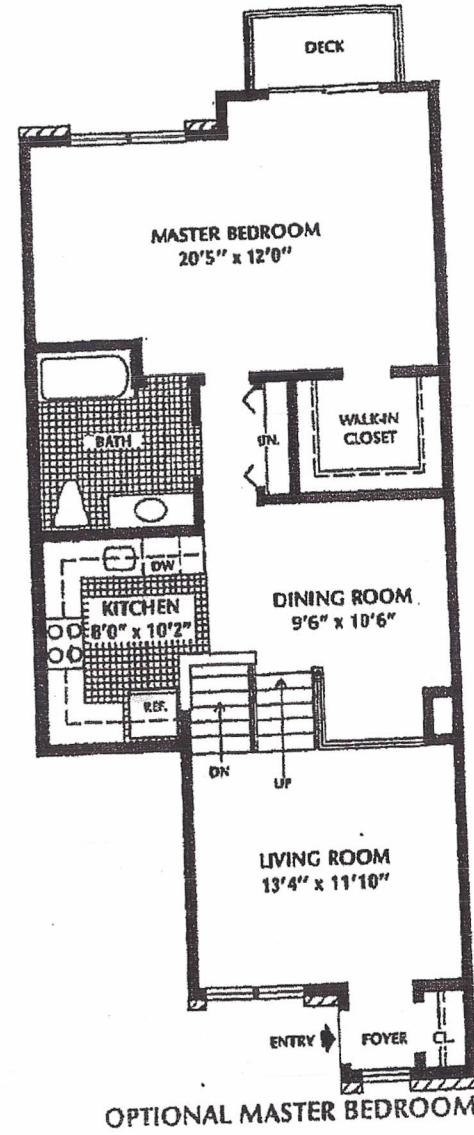
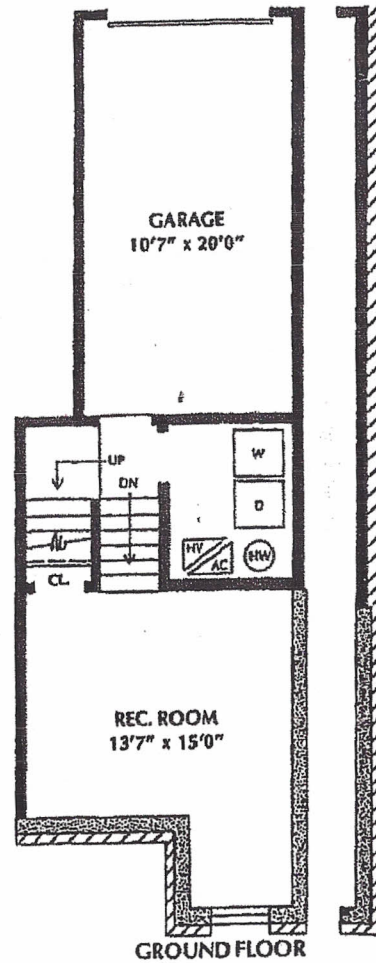


**ALBANY**  
**1228 sq. ft.**

'Jacobs Ferry' is a section of 'The Port Imperial Condominium' developed by K. Hovnanian Port Imperial Urban Renewal, Inc.



All dimensions are approximate. Purchasers must review detailed architectural drawings available in the sales office to ensure accuracy and understanding of home chosen.

